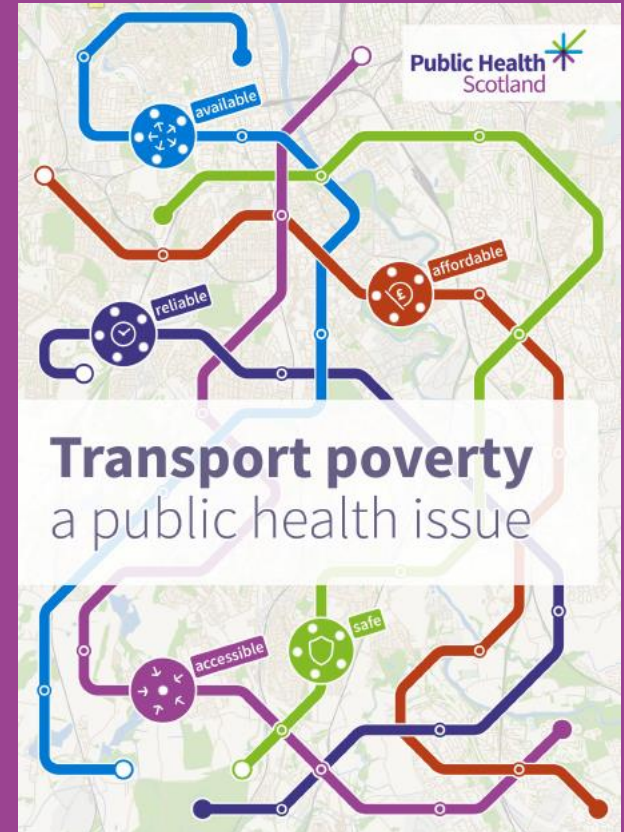


Transport Poverty

Dr Margaret Douglas
May 2024



No interests to declare



Outline

- Background and process
- What is Transport Poverty?
- Causes of Transport Poverty
- Implications for health
- Recommendations



- Public Health and Sustainable Transport Partnership
- Membership - national, regional and local transport partners, third sector, academia and public health



<https://publichealthscotland.scot/media/2850/transport-use-health-and-health-inequalities-oct2020-english.pdf>



<https://www.publichealthscotland.scot/publications/road-space-reallocation-in-scotland>



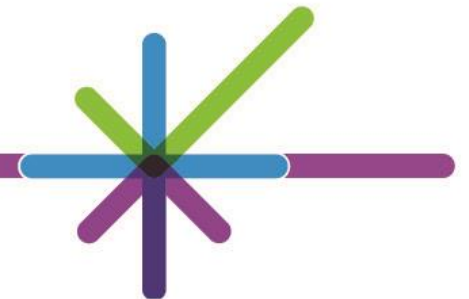
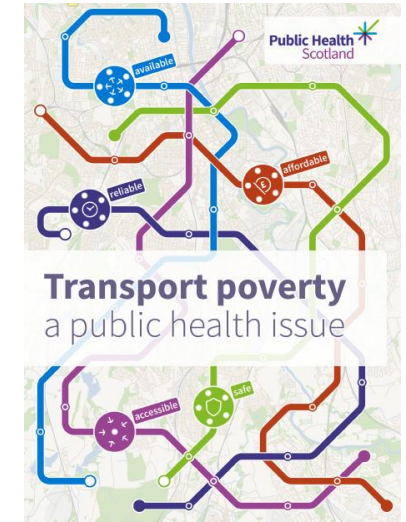
<https://www.publichealthscotland.scot/publications/a-route-map-to-achieve-a-20-reduction-in-car-kilometres-by-2030-a-health-impact-assessment-scoping-exercise>



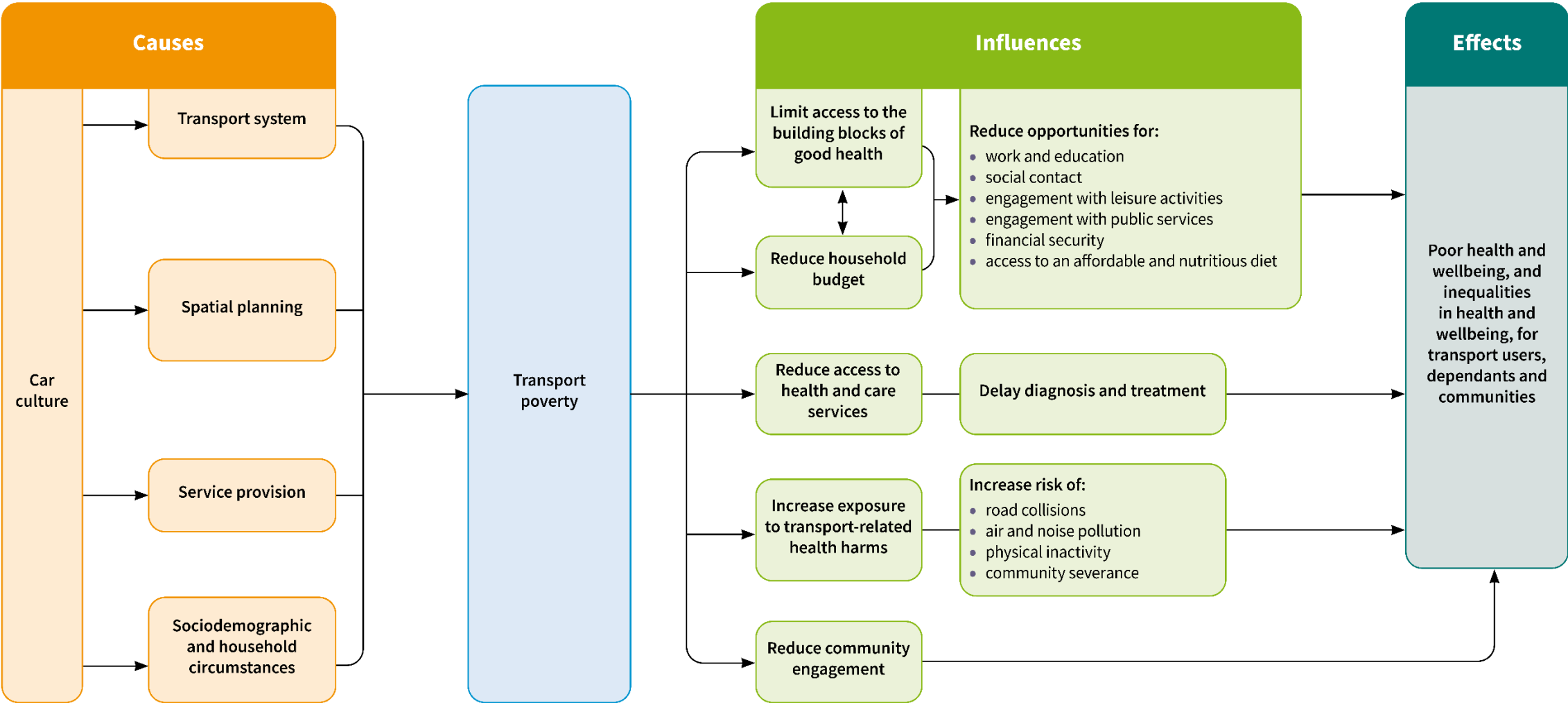
Process

- Review of key papers:
 - current definitions and measures
 - influencing factors
 - Health impacts
 - Developed definition and model
- Stakeholder engagement – workshops and meetings
- Revised definition and model
- Key data from Scotland

- Overseen by PH & ST Data and Evidence group



A model of transport poverty: the causes and influences on health and health inequalities



Transport Poverty definition

‘The lack of transport options that are

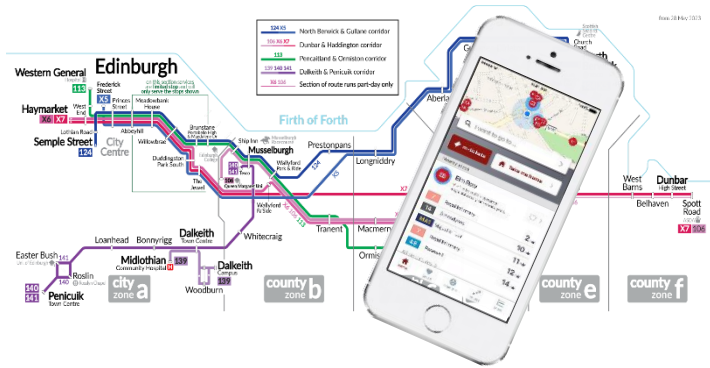


Available, Reliable, Affordable, Accessible, or Safe

that allow people to meet their daily needs and provide a reasonable quality of life.’



Causes of transport poverty



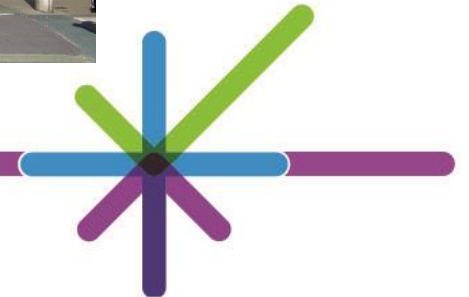
- Transport system
- Spatial planning
- Public services
- Individual characteristics
- Car culture



Image: own



Image: Copyright AJ Douglas

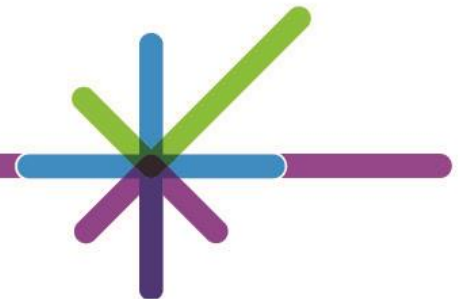
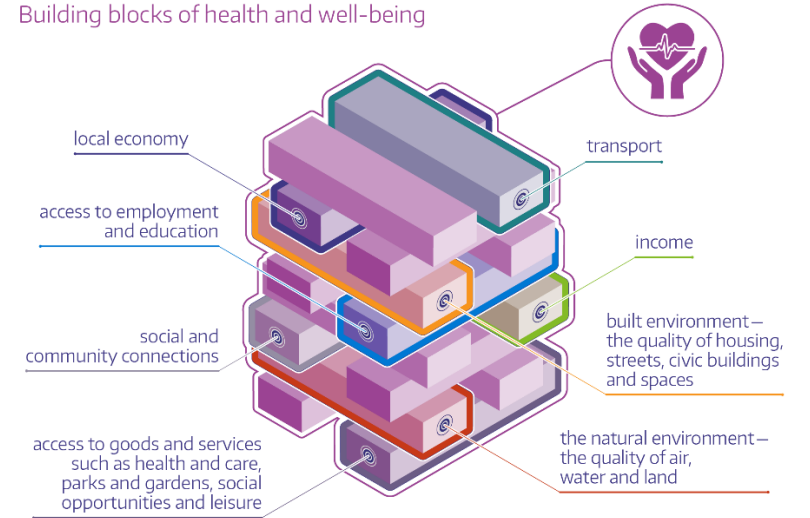


Impacts on health

- Reduced access to the building blocks of good health
- Reducing access to health care
- Exposure to health harms such as pollution and injury from collisions
- Reducing community engagement

- Can affect traveller, their dependents and wider community

Building blocks of health and well-being





[George Hodan, CC0 1.0 Public Domain Pictures](#)

Low income

Populations most affected



[Nick Yudin, CC BY-SA 4.0, via Wikimedia Commons](#)

Disabled people



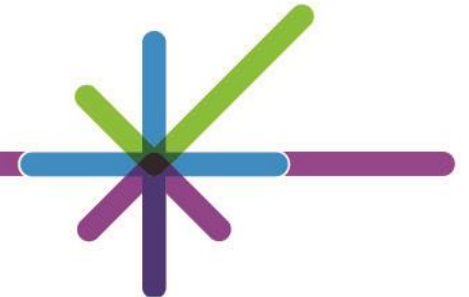
[Portrait Maude by Arbj-shrc, CC BY-SA 4.0, via Wikimedia Commons](#)

Women



[Michal Klajban, CC BY-SA 4.0, via Wikimedia Commons](#)

Rural communities



Recommendations



- Shared understanding - dimensions of Transport Poverty
- Develop indicators for each dimension – single measure inappropriate
- Increase awareness across sectors
- Sectoral specific actions:
 - Transport – invest in sustainable transport options
 - Spatial Planning - support sustainable transport hierarchy
 - Service provision – partnership with transport
 - All sectors – take account of diverse needs
 - Car culture – understand and address car dependency



Thank you!

<https://publichealthscotland.scot/our-areas-of-work/place-and-environment/transport-and-health/the-health-impact-of-transport/>

<https://www.publichealthscotland.scot/publications/transport-poverty-a-public-health-issue/transport-poverty-a-public-health-issue/>

Margaret.douglas3@phs.scot

